

State of Utah

**County Wildfire
Preparedness Plan**
For the Wildland – Urban Interface

Tooele County



11/01/2018



Department of Natural Resources
Division of Forestry, Fire and State Lands
1594 W North Temple, PO Box 145703, Salt Lake City, UT 84114-
5703

Tooele County Wildfire Preparedness Plan

Page Intentionally Left Blank

Tooele County Wildfire Preparedness Plan

Declaration and Concurrence Page

This list needs to be customized to the individual plan. Provide the names and affiliations of all cooperators. This page will then be signed after all cooperators have reviewed the plan and concur with its contents.

DAN WALTON

Tooele County Fire Warden

NAME

AFFILIATION


SIGNATURE

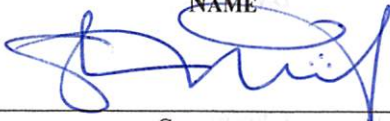
12-6-18
DATE

SHAWN MILNE

TOOELE COUNTY COMMISSIONER

NAME

AFFILIATION


SIGNATURE

11 Dec. 2018
DATE

JENNIFER HANSEN

WILDLAND URBAN INTERFACE/CATASTROPHIC FIRE

NAME

AFFILIATION


SIGNATURE

12-10-18
DATE

PAUL WIMMER

TOOELE COUNTY SHERIFF

NAME

AFFILIATION


SIGNATURE

12/11/18
DATE

BUCKY WHITEHOUSE

TOOELE COUNTY EMERGENCY MANAGEMENT

NAME

AFFILIATION


SIGNATURE

12-11-18
DATE

Tooele County Wildfire Preparedness Plan

Declaration and Concurrence Page, continued

JHENNIFER WILLIAMS

BUREAU OF LAND MANAGEMENT

NAME

AFFILIATION

SIGNATURE

DATE

MATT ARMANTROUT

FOREST SERVICE SOUTH ZONE FMO UINTA-WASATCH-CACHE

NAME

AFFILIATION

SIGNATURE

DATE

DAVE VICKERS

WASATCH FRONT FMO

NAME

AFFILIATION

Dave Vickers

12/10/2018

SIGNATURE

DATE

BRIAN TRICK

WASATCH FRONT AREA MANAGER

NAME

AFFILIATION

Brian Trick

12/10/2018

SIGNATURE

DATE

KATIE GIBBLE

WASATCH FRONT WUI COORDINATOR

NAME

AFFILIATION

Katie Gibble

12/10/18

Tooele County Wildfire Preparedness Plan

INTRODUCTION

Over 600 of Utah's communities have been classified as "at risk" of wildfire. The safety of the citizens of any community and the protection of private property and community infrastructure is a shared responsibility between the citizens; the owner, developer or association; and the local, county, state and federal governments. **The primary responsibility, however, remains with the local government and the citizen/owner.**

The purpose of wildfire preparedness planning is to...

- Motivate and empower local government, communities, and property owners to organize, plan, and take action on issues impacting the safety and resilience of values at risk
- Enhance levels of fire resilience and protection to the communities and infrastructure
- Identify the threat of wildland fires in the area
- Identify strategies to reduce the risks to structures, infrastructure and commerce in the community during a wildfire
- Identify wildfire hazards, education, and mitigation actions needed to reduce risk
- Transfer practical knowledge through collaboration between stakeholders toward common goals and objectives

Outcomes of wildfire preparedness planning...

- Facilitate organization of sustainable efforts to guide planning and implementation of actions:
1. Fire adapted communities 2. Resilient landscapes 3. Safe and effective fire response
- Improve community safety through:
 - ✓ Coordination and collaboration
 - ✓ Public awareness and education
 - ✓ Firefighter training
 - ✓ Fuel modification
 - ✓ Improved fire response capabilities
 - ✓ Fire prevention
 - ✓ Development of long-term strategies

RESOURCES

For resources to complete a wildfire preparedness plan for your community, consider organizations such as the following:

- ✓ Local / Primary fire protection provider
- ✓ Local Resource, Conservation and Development Districts
- ✓ Utah Division of Forestry, Fire and State Lands
- ✓ Utah State Fire Marshal (Dept. of Public Safety)
- ✓ Utah Division of Emergency Management
- ✓ Utah Living With Fire
- ✓ Local fire agencies
- ✓ Local emergency management services
- ✓ USDA Forest Service
- ✓ U.S. Department of Interior Agencies
- ✓ Utah Resource Conservation Districts
- ✓ Utah Soil Conservation Districts

STATEMENT OF LIABILITY

The activities suggested by this template, associated checklist and guidance document, the assessments and recommendations of fire officials, and the plans and projects outlined by the community wildfire council, are made in good faith according to information available at this time. The Utah Division of Forestry, Fire and State Lands assumes no liability and makes no guarantees regarding the level of success users of this plan will experience. Wildfire still occurs, despite efforts to prevent it or contain it; the intention of all decisions and actions made under this plan is to reduce the potential for, and the consequences of, wildfire.

Last revised March 2016

This document provides the outline for and specifies the information recommended for inclusion in a wildfire preparedness plan. **Completed Community Wildfire Preparedness Plans should be submitted to the local Area Manager or Fire Management Officer with the Utah Division of Forestry, Fire and State Lands for final concurrence.**

Page Intentionally Left Blank

Tooele County Wildfire Preparedness Plan

PLANNING OVERVIEW

Briefly describe the overall planning process that took place to complete this plan. Be sure to include a timeline of the events/meetings, the organizations and partners that participated, a description of why this planning process was initiated, and the overall intended outcome of the process, and how outcomes were accomplished. This is much like the information described above (purpose and outcome) but tailored to your community. If desired, please acknowledge any individuals or organizations that were essential to accomplishing the final plan.

This CWPP intentionally does not include the North Tooele Fire District in order to more properly provide information on the lands outside of the District.

12/21/2016 - Tooele County signs Cooperative Agreement to participate in State Fire Policy establishing a two year goal to complete a county wide CWPP.

3/8/2017 - First Countywide CWPP meeting. Held at the Emergency Operations Center in Tooele City. Was an introductory meeting in an attempt to set up a board structure, inform council members of the basic goals, and areas of focus. Delegated Dan Walton - Tooele County Fire Warden as Chairman, no others were willing to participate on the council. We had representation from; Tooele County Emergency Management, FFSL, BLM, Vernon Fire Department, Dugway Fire Department, Tooele County Roads Department, Tooele County Weeds Department, and the Tooele County Sheriff's Department.

Based on the size of the County, and the difficulty of coordinating the planning process with multiple partners, Tooele County made the decision to delegate the task of completing the CWPP to Dan Walton, County Fire Warden. Along with this task, Dan was given the responsibility of managing the County's Fire Department Budget with the intent of streamlining the ability to invest County funds into meeting the annual participation commitment required by State Fire Policy. Plans created by Individual communities who are required to or choose to complete CWPP's will be added as addendums to this plan.

As this plan has been in the planning phase for multiple years there has been adequate time to gather required information and build a base knowledge of County strengths and weaknesses when it comes to wildfire preparedness. Individuals and departments who have been critical to the completion of this plan are as follows:

Assistant County Fire Warden - Lloyd Evans

Tooele County Emergency Manager - Bucky Whitehouse

Tooele County Sheriff - Paul Wimmer

Tooele County Commissioner - Shawn Milne

Tooele County Weeds Manager - Jerry Caldwell

Tooele County Wildfire Preparedness Plan

Terra Fire Chief - Gerald Neil

Tooele County Assessor - Wendy Shubert

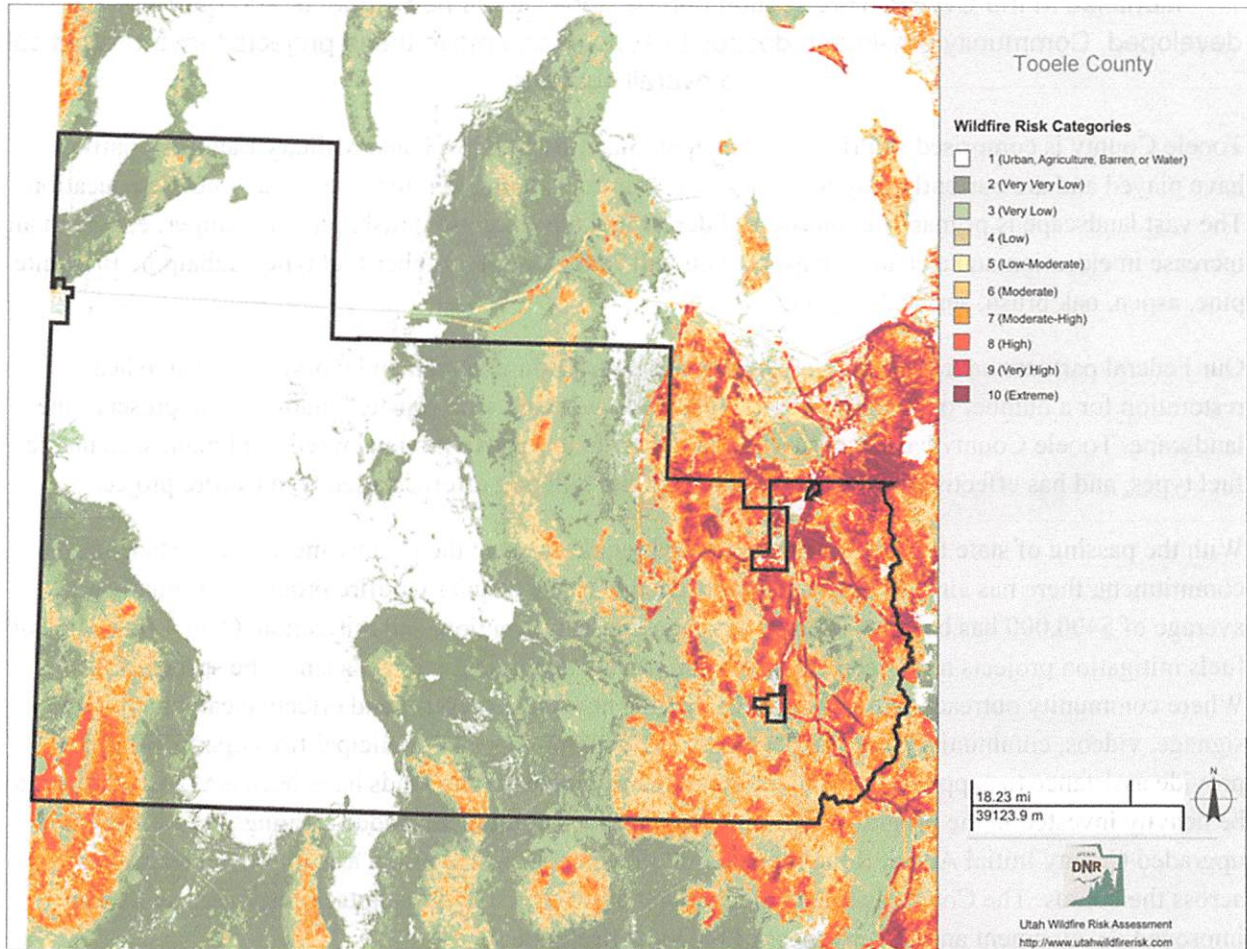
WFA WUI Coordinator - Katie Gobble

Stockton Fire Chief - Justin Huffman

Wasatch Front FMO - Dave Vickers

Tooele County Wildfire Preparedness Plan

PLAN OVERVIEW MAP Area of Interest (Intentionally Excludes the North Tooele Fire District)



Tooele County Wildfire Preparedness Plan

PARTNERSHIPS AND COLLABORATION

Briefly describe surrounding lands and the partners involved in coordinating the fuels treatments identified in the CWPP. This section can be added to as new projects and partners are developed. Community buy-in and desires to support and move these projects forward is critical to overall success.

Tooele County is comprised of Private, Municipal, State, BLM, USFS, and Military Land. All parties have played and are currently playing an active role in fuels reduction, fuel breaks, and public education. The vast landscape is primarily comprised of desert fuel types - grass, brush, pinyon, juniper, etc. With an increase in elevation and a change in aspect you will find more of a timber fuel type - subalpine fir, white pine, aspen, oak brush, serviceberry, etc.

Our Federal partners have been actively improving Sage Grouse habitat and working on watershed restoration for a number of years. The NRCS has been working with private landowners to preserve the landscape. Tooele County has been assisting landowners to remove noxious weeds and plant sustainable fuel types, and has effectively worked to expand on the bull hog efforts started by a Catfire project.

With the passing of state fire policy, and the added requirement of the County meeting a participation commitment, there has already been a dramatic change to the County wildfire program. Annually an average of \$400,000 has been invested into preparedness, prevention, and mitigation. Over 1,000 acres of fuels mitigation projects have been completed on private and municipal lands since the spring of 2017. Where community outreach was minimal before, it is now an aggressive and effective campaign with signage, videos, community events, etc. County fire departments and municipal fire departments who provide assistance to suppressing wildfires on unincorporated county lands have been and will continue to be heavily invested in the program. The new and improved equipment, added trainings, as well as the upgraded County Initial Attack Reimbursement Policy has increased moral and improved teamwork across the boards. The County is seeing quicker and more effective initial attack responses as well as improved development and effectiveness of the local firefighters.

CWPP's Completed:

Stockton (also a Firewise Community) South Rim Terra (Needs Updating)

CWPP's in Progress:

Tooele City Grantsville Rush Valley Vernon

North Tooele Fire District (**AREA NOT INCLUDED IN THIS CWPP**)

Tooele County Wildfire Preparedness Plan

PART I COMMUNITY DESCRIPTION

Community Legal Structure			
List the government entities associated with the community – city, town, unincorporated community, special service district, homeowner association(s), other.			
Organization	Contact Person	Phone Number	E-mail
Tooele County Commission	Shawn Milne	801-515-4444	smilne.tooelecounty@gmail.com
Tooele County Attorney	Scott Broadhead	435-843-3121	sbroadhead@tooelecit.org
Tooele Emergency Management	Bucky Whitehouse	435-241-0220	bwhitehouse@tciem.org
Tooele County Sheriff	Paul Wimmer	435-841-1965	pwimmer@tooeleco.org
Wasatch Front WUI Coordinator	Katie Gibble	801-678-1655	kgibble@utah.gov
Tooele County Fire Warden	Dan Walton	435-241-0027	dwalton@utah.gov

Population	
Approximate number of homes	4,728
Approximate number of lots	N/A
Approximate number of commercial entities	16,964
Approximate number of full-time residents	9,230
Approximated number of part-time residents	500
<i>Notes/comments: County assessor has no approximate number of lots.</i>	

Tooele County Wildfire Preparedness Plan

Restricting Covenants, Ordinances, etc. (Attach as appendix)	
For example, home association bylaws may have requirements regarding building construction materials or vegetation removal, or regarding access in a gated community.	
Source	Details
International Fire Code	The County abides by the International Fire Code
Tooele County Ordinance	Title 6 Public Safety/ Weed ordinance and burn permit ordinance

Access
Directions to community
Residences are accessible by numerous State and County Roads. I-80, SR-36, SR-73, SR-199, SR-196, Silver Avenue, Faust Road, etc.
All-weather access
Residents have all weather access to county from various State and County roads.
Seasonal access
Middle canyon and Erickson pass do not have access and egress during winter season.

Roads								
	None	Some	All	Adequate	Inadequate	% Pavement	% gravel	% dirt
Road signs present		X		X		100	15	5
Will support normal flow of traffic			X	X		100	100	100
Are loop roads		X		X		95	100	100
Are dead-end roads		X		X		5	0	0

Tooele County Wildfire Preparedness Plan

Turnaround space available at end of road for emergency equipment (based on turning radius listed in the guidance document)		X		X		100	100	50	
Driveways									
				Adequate	Inadequate	No	Few	Most	All
Most driveways width and height clearance, road grades and vegetation appearance are...				X				X	
Individual homeowners have posted their name and address				X				X	
<i>Notes/comments:</i>									

Structures						
	None	Few	Som e	Man y	Most	All
Wood frame construction					X	
Have wood decks or porches					X	
Have wood, shake or shingle roofs		X				
Are visible from the main subdivision road					X	
<i>Notes/comments:</i>						

Bridges, Gate, Culverts, other			
	No	Some	All
Bridges support emergency equipment			X
Gate provides easy access to emergency equipment			X
Culverts are easily crossed by emergency			X

Tooele County Wildfire Preparedness Plan

equipment			
<i>Notes/comments:</i>			

Utilities						
	Below ground	Above ground	Provided by	Phone number	% marked with a flag or other highly visible means	% utilized
Telephone service	X		Beehive	435-837-6000	N/A	N/A
Electrical service		X	Rocky Mountain	888-221-7070	N/A	N/A
Are there homes utilizing propane?		X	Private		N/A	N/A
Are there homes utilizing natural gas?	X		Dominion Energy	800-767-1689	N/A	N/A
<i>Notes/comments:</i>						
The County is too vast of an area to provide accurate percentages; these details will be identified in the individual community plans attached as addendums to this plan.						

Primary Water Sources			
Approximate % homes using central water system	70%		
Approximate %homes using individual wells	25%		
Approximate % homes having additional private water source	5%		
Water provided by	Refer to chart below		
<i>Notes/comments: First Chart Primary Water Source, Second Chart Secondary Water Sources</i>			

Tooele County Wildfire Preparedness Plan

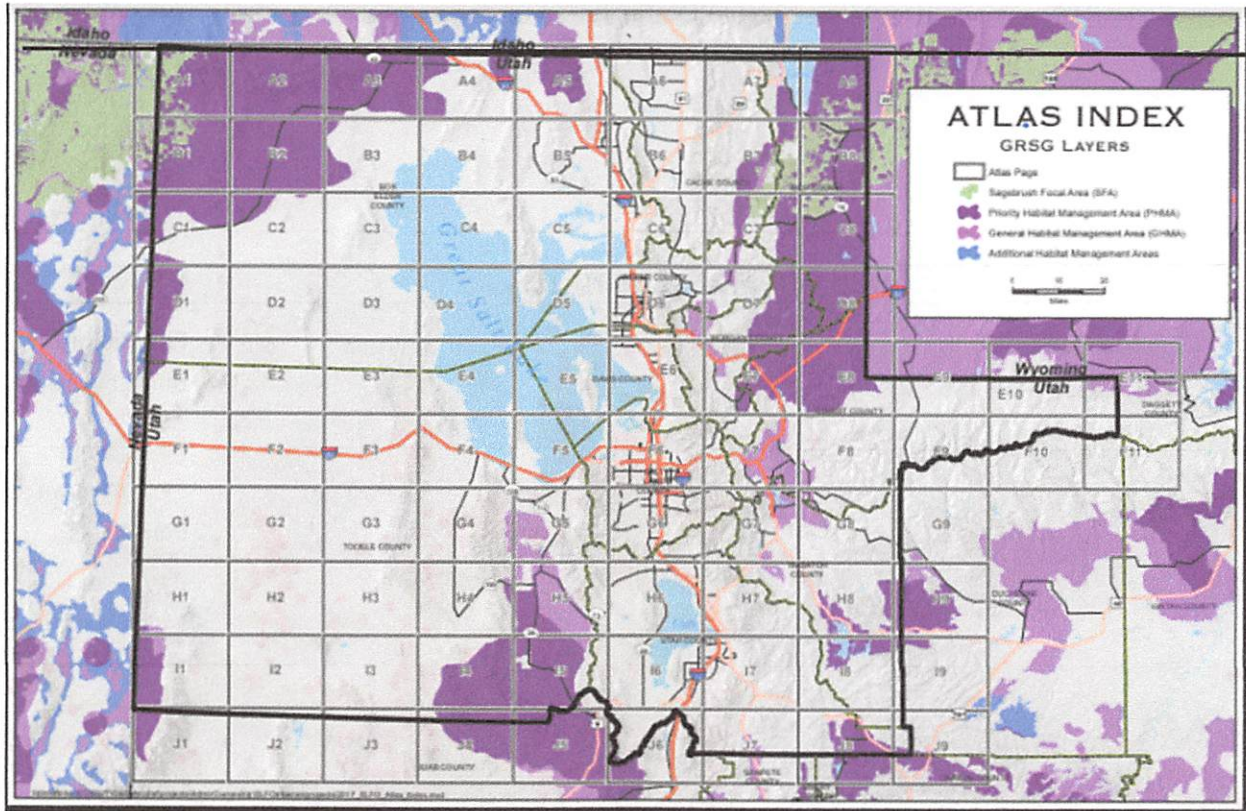
Water Supplier	Residential Use (ac-ft)	Second Home Use (ac-ft)	Commercial Use (ac-ft)	Institutional Use (ac-ft)	Industrial Use (ac-ft)	Total Potable Use (ac-ft)	Service Population	Gallons Per Capita Per Day
Dugway - English Village	128.1	0.0	209.2	209.2	209.2	755.7	890	758
Erda Acres Water Co.	145.5	0.0	0.0	1.2	0.0	146.8	300	437
Grantsville City	951.9	0.0	408.7	241.6	0.0	1,602.2	9,860	145
Lincoln Culinary Water Assn.	64.1	0.0	0.0	3.2	0.0	67.3	520	115
Ophir Canyon Water Assn.	16.8	0.0	0.0	2.8	0.0	19.6	50	350
Oquirrh Mountain Water Co.	43.4	0.0	60.3	1.0	0.0	104.7	420	223
S and W Trailer Park*	5.8	0.0	0.3	0.0	0.2	6.3	30	187
Silver Spur Ranchos	47.3	0.0	0.0	0.0	0.0	47.3	220	192
South Rim Water System	134.2	0.0	0.0	0.0	0.0	134.2	350	342
Stansbury Park Improvement District	1,761.8	0.0	72.6	470.4	15.7	2,320.4	10,520	197
Stockton Town Water System	230.9	0.0	1.5	5.5	0.0	237.8	710	299
Tooele City Water System	4,044.7	0.0	562.0	582.6	103.9	5,293.2	33,990	139
Vernon Waterworks S.S.D.	22.0	0.0	0.0	0.0	0.0	22.0	240	82
Wendover City Water System	100.0	0.0	124.7	65.0	47.6	337.2	1,040	289
West Erda Improvement District (Golden Gardens)*	21.4	0.0	0.0	3.0	1.5	25.9	150	154
County Totals**	7,717.9	0.0	1,439.2	1,585.5	378.0	11,120.5	59,290	167

*Estimated data, **County Total GPCD is system weighted

Secondary Water Source

Water Supplier	Residential Use (ac-ft)	Commercial Use (ac-ft)	Institutional Use (ac-ft)	Industrial Use (ac-ft)	Total Secondary Use (ac-ft)	Service Population	Gallons Per Capita Per Day
Dugway - English Village						890	241
<i>English Village Common Area and GC Secondary System</i>	0.0	0.0	240.0	0.0	240.0		
Erda Acres Water Co.	0.0	0.0	0.0	0.0	0.0	300	0
Grantsville City						9,860	215
<i>Grantsville Irrigation*</i>	2,370.4	0.0	0.0	0.0	2,370.4		
Lincoln Culinary Water Assn.						520	29
<i>Middle Canyon Irrigation*</i>	17.1	0.0	0.0	0.0	17.1		
Ophir Canyon Water Assn.	0.0	0.0	0.0	0.0	0.0	50	0
Oquirrh Mountain Water Co.	0.0	0.0	0.0	0.0	0.0	420	0
S and W Trailer Park	0.0	0.0	0.0	0.0	0.0	30	0
Silver Spur Ranchos	0.0	0.0	0.0	0.0	0.0	220	0
South Rim Water System	0.0	0.0	0.0	0.0	0.0	350	0
Stansbury Park Improvement District						10,520	104
<i>Stansbury Park Secondary System</i>	0.0	0.0	1,220.4	0.0	1,220.4		
Stockton Town Water System						710	6
<i>Soldier Canyon*</i>	0.0	0.0	5.0	0.0	5.0		
Tooele City Water System						33,990	3
<i>Middle Canyon Irrigation*</i>	76.2	0.0	0.0	0.0	76.2		
<i>Settlement Canyon Irrigation*</i>	38.0	0.0	0.0	0.0	38.0		
Vernon Waterworks S.S.D.						240	84
<i>Vernon Irrigation*</i>	22.5	0.0	0.0	0.0	22.5		
Wendover City Water System	0.0	0.0	0.0	0.0	0.0	1,040	0
West Erda Improvement District (Golden Gardens)	0.0	0.0	0.0	0.0	0.0	150	0
County Totals**	2,524.2	0.0	1,465.4	0.0	3,989.5	59,290	60

Tooele County Wildfire Preparedness Plan



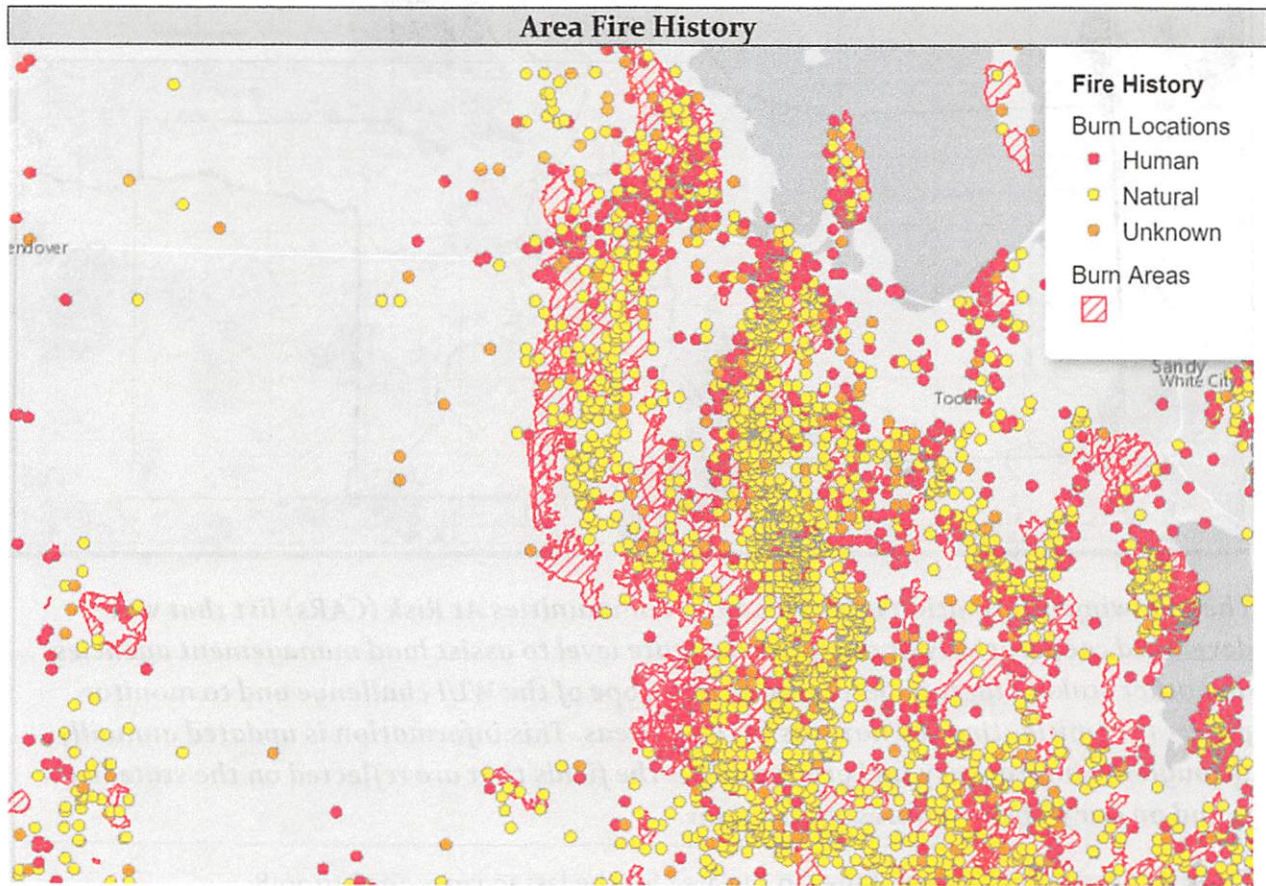
The following information is based on the Communities At Risk (CARs) list that was developed cooperatively at the local and state level to assist land management agencies and other stakeholders in determining the scope of the WUI challenge and to monitor progress in mitigating the hazards in these areas. This information is updated annually through the interagency fuel groups. Input the fields that are reflected on the state list found on our website at forestry.utah.gov.

Fire Occurrence: Number of fires in the area for the last 10 years 2008 to 2018

- 0 No Risk
- 1 Moderate 0 to 1 fire/township
- 2 High 2 to 14 fires/township
- 3 Extreme Greater than 14 fires/township

Total 3

Tooele County Wildfire Preparedness Plan



<https://utahdnr.maps.arcgis.com/apps/Viewer/index.html?appid=6e357220ef6f4d49824309e6466e085a>

Tooele County Wildfire Preparedness Plan

Fuel Hazard: Assess the fuel conditions of the landscape and surrounding the community

0 No Risk

1 Moderate (Moderate to low to control, fire intensities would generally cause moderate damage to resources based on slope, wind speed and fuel. Vegetation Types: Ponderosa pine/mountain shrub, grassland, alpine, dry meadow, desert grassland, Ponderosa pine, Aspen and mountain riparian.)

2 High (High resistance to control, high to moderate intensity resulting in high to moderate damage to resources depending on slope, rate of spread, wind speed and fuel loading. Vegetation Type: Maple, mountain shrubs, sagebrush, sagebrush/perennial grass, salt desert scrub, Black Brush, Creosote and Greasewood.)

3 Extreme (High resistance to control, extreme intensity level resulting in almost complete combustion of vegetation and possible damage to soils and seed sources depending on slopes, wind speed, rate of spread and fuel loading.)

Total 3

Values Protected: Evaluate the human and economic values associated with the community or landscape, such as homes, businesses and community infrastructure.

0 No Risk

1 Moderate (Secondary Development: This would be seasonal or secondary housing and recreational facilities.)

2 High (Primary Development: This would include primary residential housing, commercial and business areas.)

3 Extreme (Community infrastructure and community support: This would be water systems, utilities, transportation systems, critical care facilities, schools manufacturing and industrial sites. It may also include valuable commercial timber stands, municipal watersheds and areas of high historical, cultural and/or spiritual significance which support and/or are critical to the well-being of the community.)

Total 3

Tooele County Wildfire Preparedness Plan

Insurance Rating	
Provide the current insurance rating for the community	
ISO Fire Insurance Rating:	9

Protection Capabilities: Insurance Services Organization (ISO) rating for the community will serve as an overall indicator of the protection capabilities.

- Extreme 3 ISO Rating 10
- High 2 ISO Rating 7 to 9
- Moderate 1 ISO Rating of 6 or lower

Total 9

Fire Occurrence	Fuel Hazard	Values Protected	Fire Protection Capabilities	Overall Rating
3	3	3	2	11
Total: 4-7 Moderate, 8-11 High, 12 Extreme				High

The following information is based on the Utah Wildfire Risk Assessment Portal (UWRAP) and Area of Interest (AOI) Summary Reporting Tool. Reports are generated using a set of predefined map products developed by the West Wide Wildfire Risk Assessment (2012) project. The UWRAP provides a consistent, comparable set of scientific results to be used as a foundation for wildfire mitigation and prevention planning in Utah.

Wildland Development Areas (WUI): Data set is derived using modeling techniques based on the Where People Live and population count data available to government agencies from the Department of Homeland Security.

Wildland Development Area (WUI) Impacts: Data set is derived using a Response Function modeling approach. To calculate the Wildland Development Area Impact Response Function Score, the Wildland Development Area housing density data was combined with flame length data and Response Functions assignments to represent potential impacts.

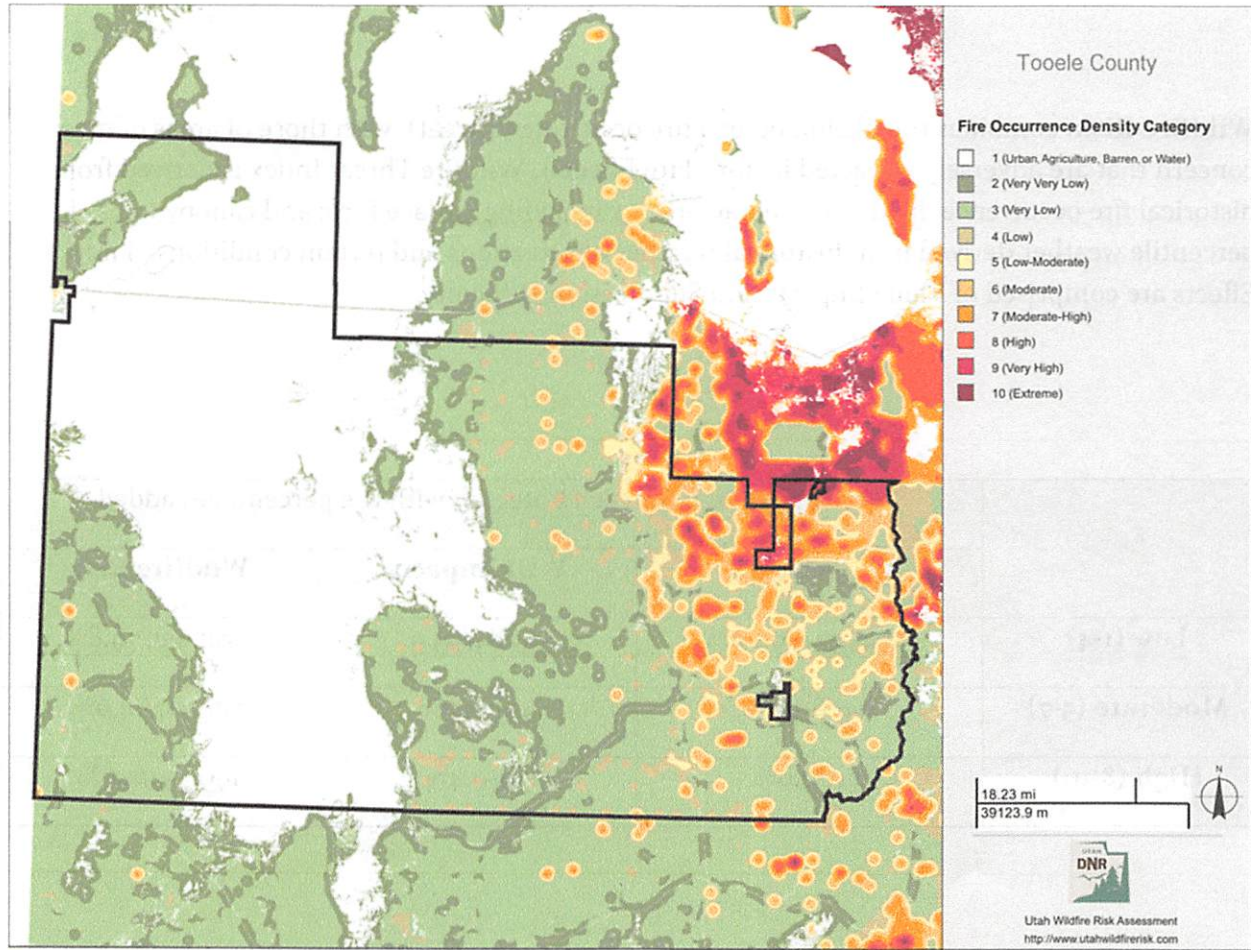
Tooele County Wildfire Preparedness Plan

Wildfire Risk: combines the likelihood of a fire occurring (Threat), with those of areas of most concern that are adversely impacted by fire (Fire Effects). Wildfire Threat Index is derived from historical fire occurrence, landscape characteristics including surface fuels and canopy fuels, percentile weather derived from historical weather observations and terrain conditions. Fire Effects are comprised of Value Impacts and Suppression Difficulty.

	Total Acres AOI for each Category with the percentages added		
	WUI	WUI Impacts	Wildfire Risk
Low (1-4)	3,525,524/99.9%	8,084/93.9	2,811,651/79.8%
Moderate (5-7)	1,406/0.1%	495/5.7%	516,267/14.6%
High (8-10)	341/0.0%	39/0.4%	199,352/5.6%

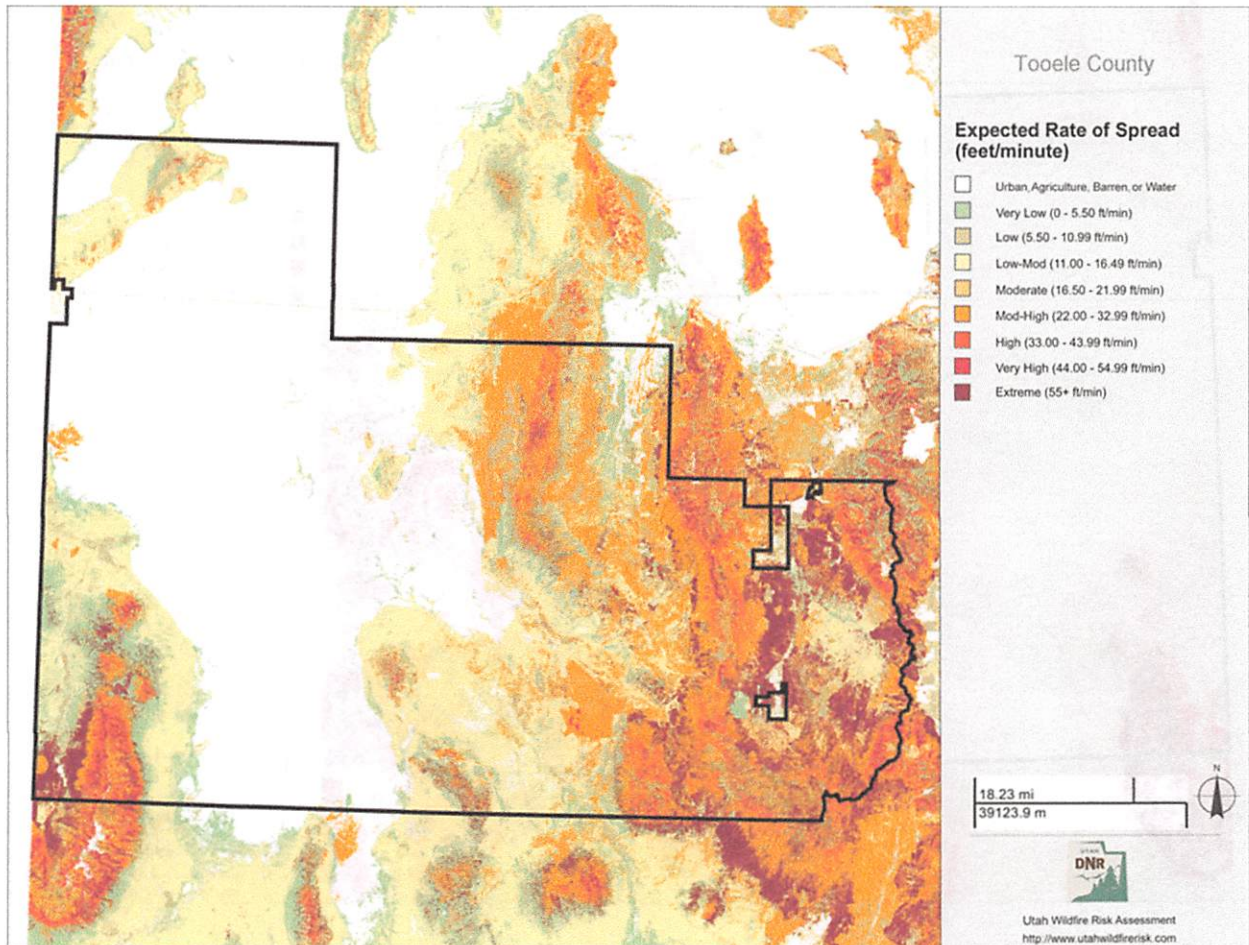
Tooele County Wildfire Preparedness Plan

(Intentionally Excludes the North Tooele Fire District)



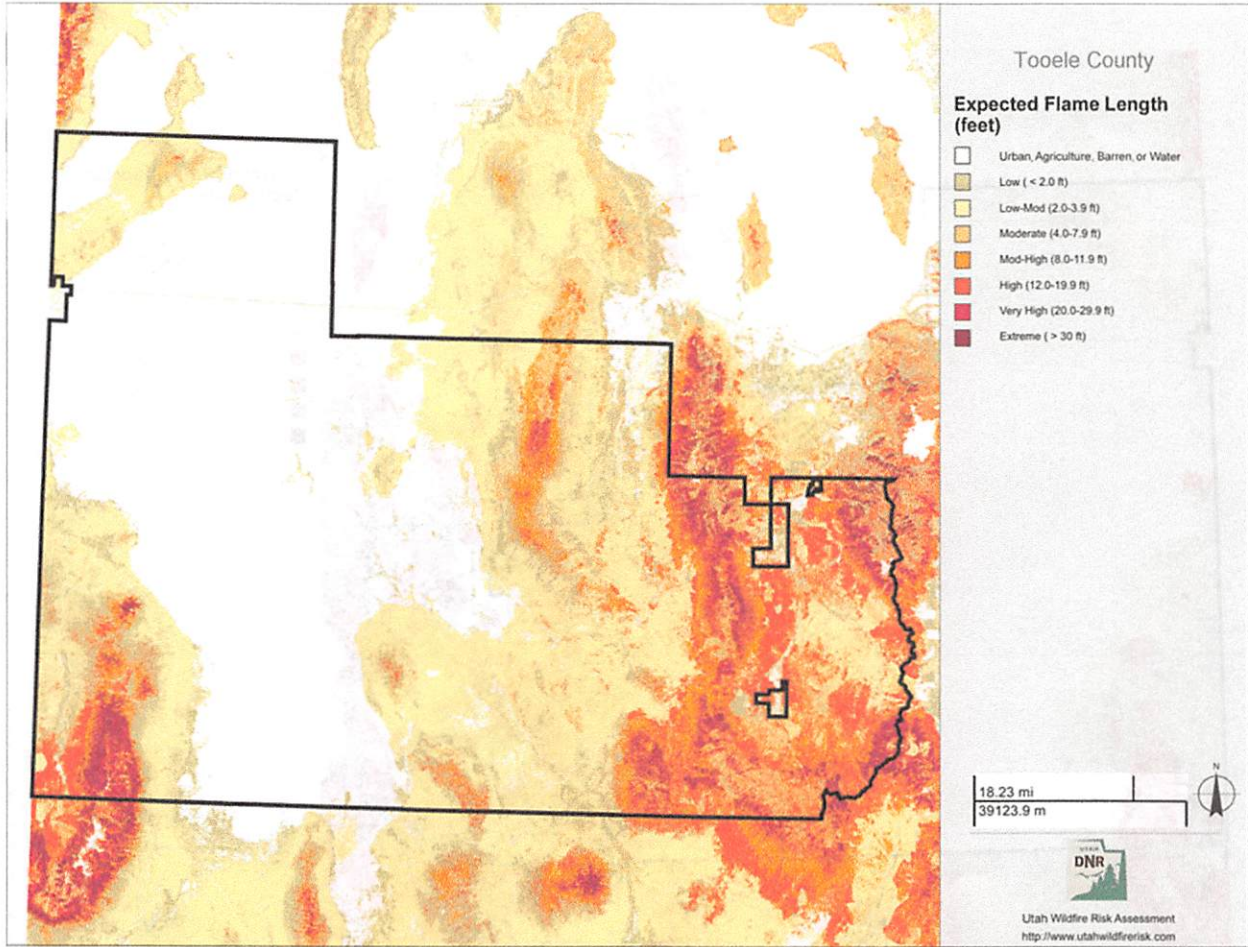
Tooele County Wildfire Preparedness Plan

(Intentionally Excludes the North Tooele Fire District)



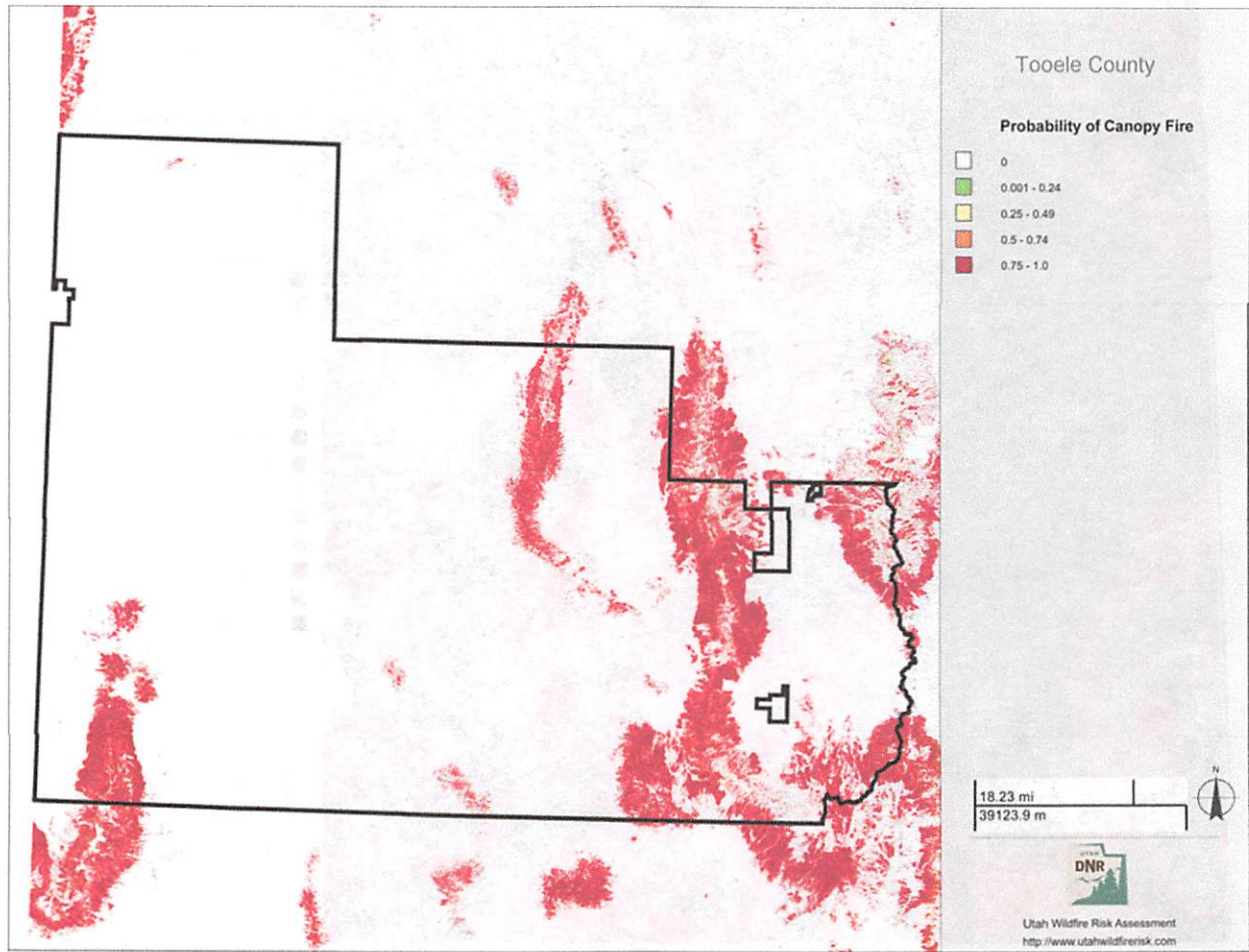
Tooele County Wildfire Preparedness Plan

(Intentionally Excludes the North Tooele Fire District)



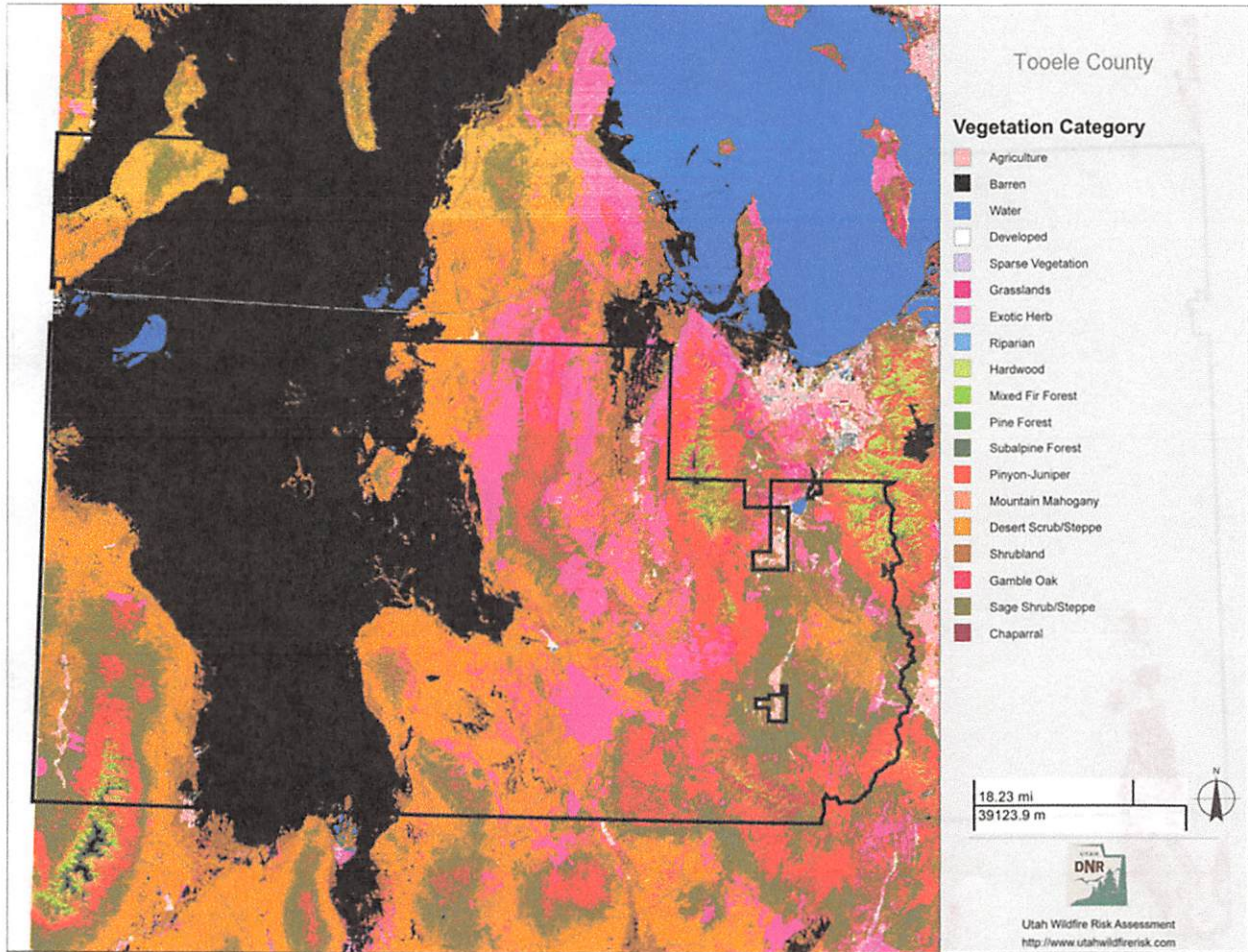
Tooele County Wildfire Preparedness Plan

(Intentionally Excludes the North Tooele Fire District)



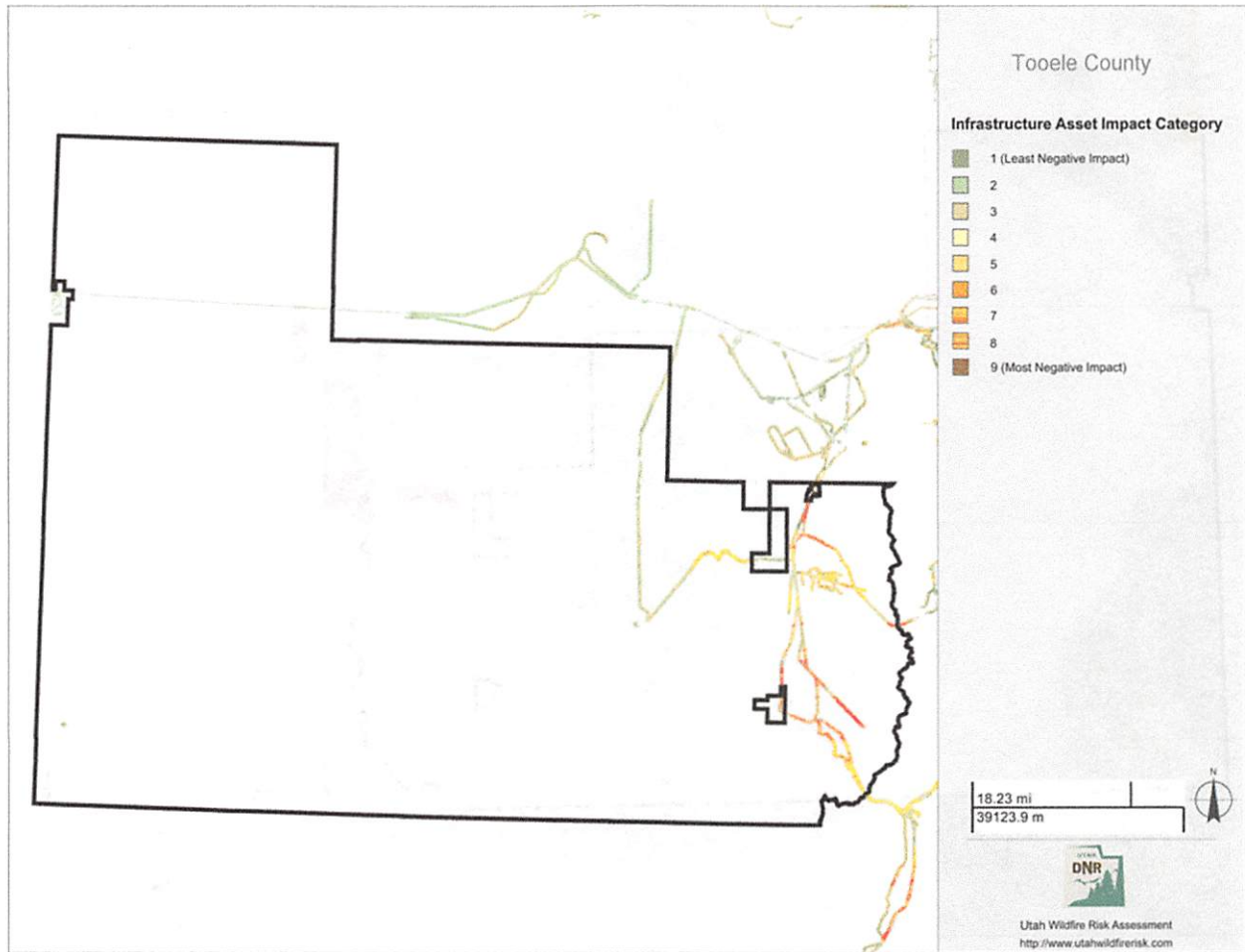
Tooele County Wildfire Preparedness Plan

(Intentionally Excludes the North Tooele Fire District)



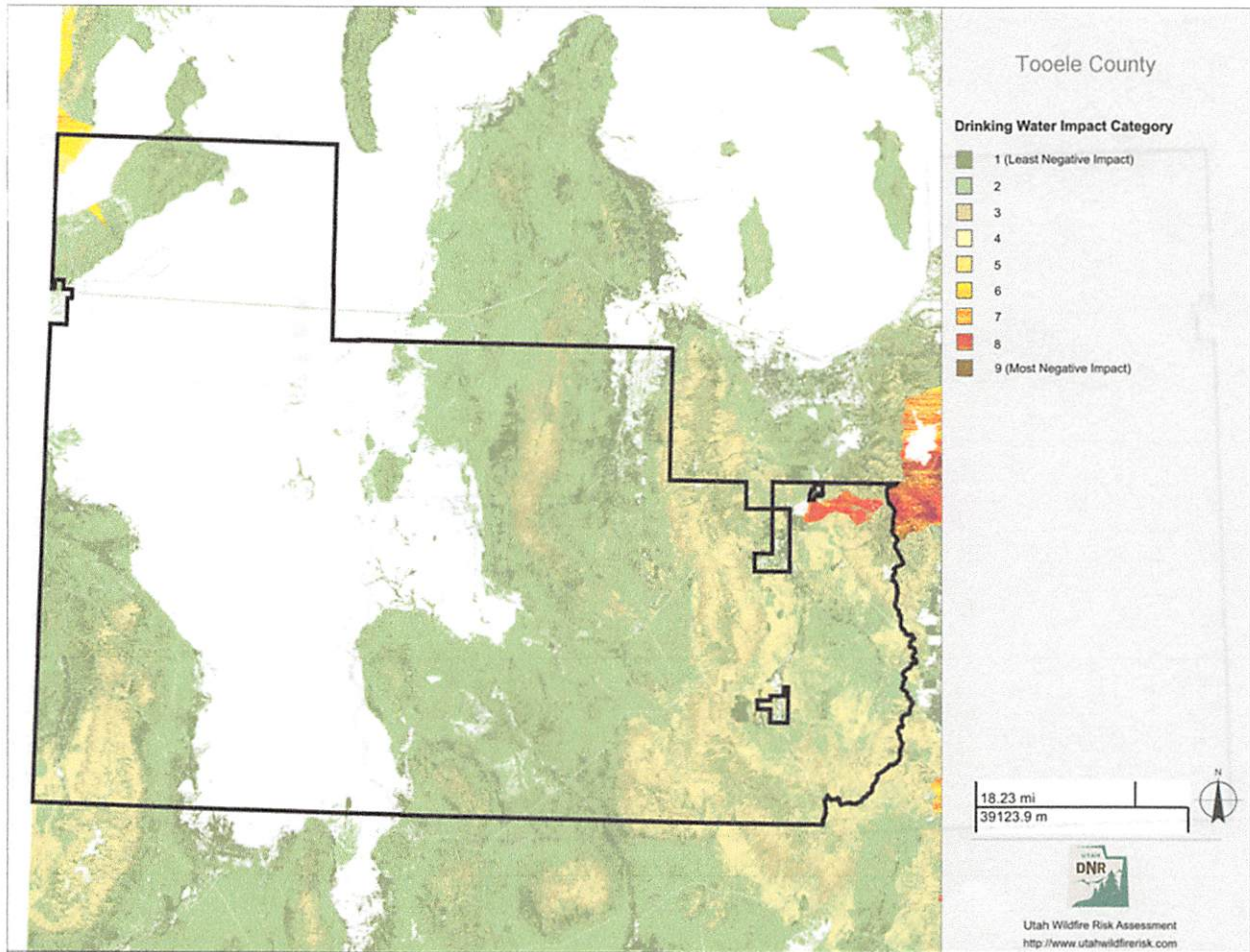
Tooele County Wildfire Preparedness Plan

(Intentionally Excludes the North Tooele Fire District)



Tooele County Wildfire Preparedness Plan

(Intentionally Excludes the North Tooele Fire District)



Tooele County Wildfire Preparedness Plan

Past Accomplishments	
Prevention	<ul style="list-style-type: none"> ● Since 2017 an average of \$100,000 has been invested into wildfire prevention annually, including but not limited to: <ul style="list-style-type: none"> ○ Billboards - Stationary and mobile ○ PSA Video as a movie theatre preview ○ Give-a-ways, information packets, and booth set up for fire prevention events ○ A bounce house to be used by any and all fire departments for prevention events
Preparedness	<ul style="list-style-type: none"> ● Since 2017 an average of \$100,000 has been invested into wildfire preparedness annually, including but not limited to: <ul style="list-style-type: none"> ○ Upgraded communication equipment with VHF capability ○ New and improved PPE ○ Addition of four 6,000 gallon portable water tanks to be used by local fire departments ○ Build up/conversion of excess military vehicles to be used and fire apparatus
Mitigation	<ul style="list-style-type: none"> ● Since 2017 an average of \$200,000 has been invested into wildfire mitigation annually, including but not limited to: <ul style="list-style-type: none"> ○ Partnering with private landowners on fuels reduction projects where the county covers 90% of the expenses for the initial phase ○ Increased use of prescribed fire on private land ○ Installation of green strip fuel breaks around communities / values at risk
Maintenance	<ul style="list-style-type: none"> ● Bi-annual inspections of project areas to identify maintenance needs.

Tooele County Wildfire Preparedness Plan

Tooele County Wildfire Preparedness Plan

PART III: RISK REDUCTION GOALS/ ACTIONS

Goals of Plan: Provide a brief statement under the Prevention, Preparedness, Mitigation and Maintenance goals. These should align with the pillars of the National Cohesive Strategy and the Utah Catastrophic Wildfire Reduction Strategy (1.Resilient Landscapes 2. Fire Adapted Communities 3. Wildfire Response).

Identification of Actions: Provide detailed project information. These projects/actions can be mapped/tracked in the Utah WRA portal and should be consistent with a Cooperative Agreement in compliance with the Wildfire Policy if applicable.

GOAL A: PREVENTION – Activities directed at reducing the occurrence of fires, including public education, law enforcement, personal contact.

Goal A.1 – Prevention			
Action(s):	Timeline:	Community Lead:	Priority:
Establish annual prevention budget based on PC, continually plan and implement actions.	Annual County Budget Meeting	Dan Walton	High
Acquire prevention event materials (trailer, tent, table, handouts, banners, etc.)	Continuous	Dan Walton	High
PSA(Public Service Announcements). Billboards, movie theater previews, flyers/handouts, local news, social media, etc.	Continuous	Dan Walton	High
Support municipal & county agencies with tools/information to expand prevention outreach.	Continuous	Dan Walton	High
<i>Notes, updates ,and monitoring</i> Average of \$100,000 invested into Fire Prevention annually.			

GOAL B: PREPAREDNESS – Activities that lead to a state of response readiness to contain the effects of wildfire to minimize loss of life,

Tooele County Wildfire Preparedness Plan

injury, and damage to property. Including access to home/community, combustibility of homes/structures and creating survivable space.

Goal B.1 - Evaluate, upgrade and maintain community wildfire preparation			
Action(s):	Timeline:	Community Lead:	Priority:
Establish annual preparedness budget based on PC, continually plan and implement actions.	Annual County Budget Meeting	Dan Walton	High
Invest annual preparedness budget into County resources and those who provide automatic or mutual aid to unincorporated county lands.	Continuous	Dan Walton	High

Goal B.2 - Educate community members to prepare for and respond to wildfire.			
Action(s):	Timeline:	Community Lead:	Priority:
Training opportunities communicated to local Fire Chiefs and disseminated to firefighters	Opportunity Dependent	Dan Walton	High
UFRA training schedule available to all agencies	Always	Fire Chiefs	High
On scene wildfire training opportunities	Incident Dependent	Incident Commander	High
Wasatch Front Engine Academy	Annually	WFA FMO	Medium
Fire prevention events, signage, public service announcements, social media outreach	Often	Dan Walton	High
<p><i>Notes, updates ,and monitoring</i> Certified FFT2's added annually. Advanced classes offered annually. Firefighter articipation currently low to fair. Public education seems to already have an impact with a decrease in fires caused by local residents.</p>			

Tooele County Wildfire Preparedness Plan

Goal B.3 – Address identified regulatory issues impacting community wildfire prevention and response needs.			
Action(s):	Timeline:	Community Lead:	Priority:
County ordinances to be reviewed and updated as necessary.	1-2 Years	Dan Walton	High
<i>Notes, updates ,and monitoring</i> County Nuisance Weed Ordinance identified as an area needing updates.			

Goal B.4 – Evaluate response facilities and equipment.			
Action(s):	Timeline:	Community Lead:	Priority:
Evaluate county department locations, staffing, personnel availability, equipment reliability and effectiveness, building conditions and capacities, etc.	1-3 Years	Dan Walton	High
Evaluate Municipal department locations, staffing, personnel availability, equipment reliability and effectiveness, building conditions and capacities, etc.	1-3 Years	Dan Walton	High
Evaluate D.O.D. fire department locations, staffing, personnel availability, equipment reliability and effectiveness, building conditions and capacities, etc.	1-3 Years	Dan Walton	Medium

Tooele County Wildfire Preparedness Plan

GOAL C: MITIGATION – Actions that are implemented to reduce or eliminate risks to persons, property or natural resources including fuel treatments and reduction.

Goal C.1 – Decrease fuels within the community to reduce wildfire impact in and around the community.			
Action(s):	Timeline:	Community Lead:	Priority:
Identify private land that would benefit from fuels reduction, contact landowner, make proposal, make plan, implement plan.	Continuous	Dan Walton	High
Identify municipal land that would benefit from fuels reduction, contact landowner, make proposal, make plan, implement plan.	Continuous	Dan Walton	High
Identify State land that would benefit from fuels reduction, contact landowner, make proposal, make plan, implement plan.	Continuous	Dan Walton	High
Coordinate with Federal and State Partners for multi-agency projects.	Continuous	Dan Walton	High
<p><i>Notes, updates, and monitoring</i></p> <ul style="list-style-type: none"> Leftwich Mastication - Complete Ekker Prescribed Fire - Complete Johnson Mastication - Complete Johnson Prescribed Fire - Complete Sagers Mastication - Complete Alder Mastication - Complete Hogan Mastication - Complete South Rim Mastication - Complete South Rim Seeding - Pending, estimated completion Fall 2018 Camp Wapiti Shaded Fuel Break - In Progress Middle Canyon Shaded Fuel Break - In Progress SR112 Fenceline Prescribed Fire - Complete Smelter Prescribed Fire - Complete Warr Prescribed Fire - Complete 			

Tooele County Wildfire Preparedness Plan

Goal C.2 - Work with local, state and federal fire officials to decrease fuels on private and adjacent public lands to reduce wildfire intensity and impact in and around the community.			
Action(s):	Timeline:	Community Lead:	Priority:
Terra Fuel Break - BLM	Summer 2018 / Winter 2019	BLM	Medium
Grantsville Grazing Mastication - CatFire- NRCS, BLM, State	2016 - Present	WFA WUI Coordinator	High
Sheep Rock fuels project - Mastication/Lop & Scatter - USFS	2016 - Present	USFS	High
Lakepoint / Stockton / Onaquii Range Projects - BLM	2016 - Present	BLM	High
<i>Notes, updates ,and monitoring</i>			

GOAL D: MAINTENANCE – the process of preserving actions that have occurred including fuel treatments and reduction.

Goal D.1 - Regularly evaluate, update and maintain project commitments.			
Action(s):	Timeline:	Community Lead:	Priority:
Evaluate effectiveness of County Funded projects, evaluate need for maintenance, implement.	Bi-Annually	Dan Walton	High
Inspect Cat Fire project effectiveness, implement necessary maintenance.	Unknown	WFA WUI Coordinator	High
BLM maintains their projects	Unknown	BLM	High
USFS maintains their projects	Unknown	USFS	High

Tooele County Wildfire Preparedness Plan

PART IV: CONTACTS

The contacts in this part identify community resources that can be used to complete the goals of the plan.

Tooele County CWPP Contact List		
Name	Phone	Email
County Commissioner - Shawn Milne	801-515-4444	smilne.tooelecounty@gmail.com
County Commissioner - Myron Bateman	435-843-3150	mbateman@tooeleco.org
County Commissioner - Wade Bitner	435-843-3150	wbitner@tooeleco.org
Sheriff Paul Wimmer	435-841-1965	pwimmer@tooeleco.org
Sheriff Investigations - Lt. Eli Wayman	435-241-0066	ewayman@tooeleco.org
Planning Commission - 7 Members	435-843-3160	mgillette@tooeleco.org
Emergency Management - Bucky Whitehouse	435-241-0220	bwhitehouse@tcem.org
Emergency Management - Andy Tanner	435-830-6114	atanner@tcem.org
Tooele County Attorney - Scott Broadhead	435-843-3121	sbroadhead@tooelecity.org
Parks and Recreation - Mark McKendrick	435-843-4001	mmckendrick@tooeleco.org
Weed Control Board - Darrell Johnson	435-830-8361	

Tooele County Wildfire Preparedness Plan

County Weed Specialist - Jerry Caldwell	435-830-7273	jrcaldwell@tooeleco.org
County Roads Dept - Rod Thompson	435-830-2016	rthompson@tooeleco.org
S Rim Special Service District Board - Steve Griffith	435-830-2532	griffithlandcorp@gmail.com
Trails Committee Board - Paul Dart		
Terra Fire Dept - Gerry Niel	435-830-8347	gerald.neil@yahoo.com
Stockton Fire Dept - Justin Huffman	801-828-0268	61huffman61@gmail.com
Rush Valley Fire Dept - Kevin Russell	435-830-8707	kevin.o.russell.civ@mail.mil
Tooele Army Depot FD - Craig Tate	435-830-7074	craig.t.tate.civ@mail.mil
Vernon Fire Dept - Scott Pehrson	435-840-3191	scottraypehrson@gmail.com
Dugway Fire Dept - Patrick Carnahan	435-831-2236	patrick.g.carnahan2.civ@mail.mil
Wendover Fire Dept - Cami Carter	775-388-1508	cami.b.nelson@gmail.com
UTTR Fire Dept - Kevin Caudill	801-777-1555	kevin.caudill@us.af.mil
Ibapah Fire Dept - Clint Downs	435-234-1134	clintdownso811@yahoo.com
Ibapah Fire Dept - Richard Henriod	775-296-1754	richardhenriod@gmail.com
Mayor of Stockton - Thomas Karjola	435-882-3877	tkarjola@stocktontown.org
Fire Warden - Dan Walton	435-241-0027	dwalton@utah.gov

Tooele County Wildfire Preparedness Plan

Wasatch Front WUI Coordinator - Katie Gible	801-678-1655	kgibble@utah.gov
Wasatch Front Area Manager - Brian Trick	385-214-5269	btrick@utah.gov
Wasatch Front FMO - Dave Vickers	801-554-8984	dvickers@utah.gov
BLM – Jhennifer Williams	385-266-1132	jrawling@blm.gov
BLM - Erik Valdez	208-312-1692	evaldez@blm.gov
USFS - Matt Armantrout	801-361-8257	marmanttrout@fs.fed.us
NRCS - Matt Phillippi	435-338-3303	mathew.phillippi@ut.usda.gov
Transcript Bulletin - Steve Howe	585-353-9133	showe@tooeletranscript.com
Private Land Owner - Bill Hogan	435-830-2646	bbhogan52@gmail.com

Tooele County Wildfire Preparedness Plan

APPENDIX

Appendix A: South Rim CWPP

Contents :	CWPP	URL: https://drive.google.com/open?id=oB8dgU5MhnWtaUklmakRDakxtOUk

Appendix B: North Tooele CWPP

Contents :	CWPP (In Progress)	URL:

Appendix C: Terra CWPP

Contents :	CWPP (Needs Updating)	URL: https://drive.google.com/open?id=oB8dgU5MhnWtaZW41ZjRjNkpVQnc

Appendix D: Tooele County MOB Guide

Contents :	Tooele County Mobilization Guide	URL: https://drive.google.com/open?id=18_cwhBKEOUH3sQW5xqkwOvgW6lFelvKQ

Tooele County Wildfire Preparedness Plan

Appendix E: Stockton CWPP

Contents :	CWPP	URL: https://drive.google.com/open?id=oB8dgU5MhnWtaaU5mc2cxMmqGNjFKMUYoTFdCeVFGdnpoaFj

Appendix F: Rush Valley CWPP

Contents :	CWPP (In Progress)	URL:

Appendix G: Vernon CWPP

Contents :	CWPP (In Progress)	URL:

Appendix H: Tooele City CWPP

Contents :	CWPP (In Progress)	URL:

Tooele County Wildfire Preparedness Plan

Appendix I: Grantsville CWPP

Contents :	CWPP (In Progress)	URL:

Appendix J: Tooele County Code

Contents :	Tooele County Code – Title 6: Public Safety	URL: http://www.co.tooele.ut.us/codes/title6.pdf

ANNUAL SUMMARY
Wildland Fire Participation Commitment

Participating Entity:	Tooele County
Participation Commitment:	\$434,278.00

WILDLAND FIRE PREVENTION		
Date	Description / Project Title	Amount \$
1/1/2018	Ammortized from 2017 - purchase of YESCO billboard time.	\$247.00
3/12/2018	YESCO - 6 month billboard contract.	\$26,075.00
4/4/2018	National Cine Media - 22 week theatre preview contract.	\$12,174.00
5/17/2018	Logowear - Handouts for prevention events.	\$6,263.00
5/25/2018	Transcript Bulletin - Printing of handouts for prevention events.	\$619.00
5/25/2018	Russell Welding - Game construction for prevention events.	\$1,284.00
5/29/2018	Cal Ranch - Supplies for prevention display.	\$68.00
6/5/2018	Individual Business Solutions - Memorial Day Weekend prevention campaign.	\$5,400.00
7/1/2018	Individual Business Solutions - July prevention campaign, mobile billboards.	\$22,800.00
7/29/2018	Individual Business Solutions - August prevention campaign, mobile billboards.	\$20,800.00
8/27/2018	Individual Business Solutions - 9 Day prevention campaign, mobile billboards.	\$6,680.00
Total Amount of Prevention		\$102,410.00

WILDLAND FIRE PREPAREDNESS (counts toward maximum of 25% of annual Participation Commitment)		
Date	Description / Project Title	Amount \$
1/1/2018	AMMORTIZED FROM 2017 - JComm dual band radios for Stockton FD.	\$9,601.00
1/1/2018	JComm - Dual band radios for Terra FD. \$29,718 AMMORTIZED FOR FUTURE.	\$29,718.00
2/7/2018	JComm - Radios for Rush Valley FD. \$10,949.50 AMMORTIZED FOR FUTURE.	\$10,949.50
2/7/2018	JComm - Dual band radios for Vernon FD. \$16,752.50 AMMORTIZED FOR FUTURE.	\$16,752.50
5/17/2018	NIFC - NWCG publications order for wildland fire training.	\$177.92
3/26/2018	Weidner-4 portable tanks, 6,000 gallons each. \$10,858.60 AMMORTIZED FOR FUT	\$4,315.57
5/15/2018	Weidner Fire - Wildland boots for Vernon FD.	\$1,025.00
4/30/2018	LN Curtis - Wildland equipment for Vernon FD.	\$1,108.16
6/29/2018	Larsen Fire Apparatus, Inc. - New pump for Terra FD water tender.	\$4,400.00
5/17/2018	Cal Ranch - Chainsaw and tools for Terra FD.	\$601.35
5/29/2018	Russell Welding - 2300 gallon steel water tank for FEPP build up, Vernon FD.	\$8,894.00
5/29/2018	Russell Welding - 1800 gallon steel water tank for FEPP build up, Stockton FD.	\$10,294.00
5/29/2018	Weidner Fire - Wildland boots for Rush Valley FD.	\$2,151.00
7/1/2018	Mountain High Electronics - Radio installations.	\$6,482.00
6/19/2018	Boyce Equipment - New tires for Rush Valley FD tender, cost split 50/50	\$1,250.00
2/12/2018	Utah Communication Authority - Radio Programming	\$850.00
Total Amount of Preparedness		\$108,570.00

WILDLAND FIRE MITIGATION (minimum of 50% of annual Participation Commitment must be mitigation)		
Date	Description / Project Title	Amount \$
1/1/2018	Mitigation not met from 2017	-\$9.00
5/30/2018	Giles Construction - Mastication of Sagers Unit, 212 acres.	\$56,180.00
6/18/2018	Giles Construction - Mastication of Hogan Unit, 415 acres.	\$120,350.00
2/26/2018	Terra FD - Project work, Jan & Feb 2018 prescribed fires.	\$2,920.00

NOTE: Please attach copies of any receipts related to direct expenditures and, when applicable, individual project sheets.

ANNUAL SUMMARY
Wildland Fire Participation Commitment

6/11/2018	North Tooele Fire District - Project work, Feb & April prescribed fires.	\$900.00
5/2/2018	Stockton FD - Project work, April prescribed fire.	\$500.00
5/30/2018	Safety Supply - Project safety equipment.	\$966.48
6/7/2018	Cal Ranch - Brush mower for Terra FD to complete fire breaks.	\$1,249.99
8/2/2018	Giles-Mastication - S. Rim Fuel Break, 55 acres. \$11,718.62 AMMORTIZED FOR FU	\$9,181.38
4/27/2018	Lone Peak Conservation Center - Dromedary squad for prescribed fire.	\$1,313.00
8/18/2018	State of Utah - Program code FFMISC55, Tooele County project work.	\$12,373.15
12/1/2018	State of Utah - Program code FFMISC55, Tooele County project work.	\$11,359.00
9/30/2018	COST RECOVERY INITIATED AND COLLECTED BY COUNTY FOR 2018 FIRES	\$6,014.00
Total Amount of Mitigation		\$223,298.00
TOTAL AMOUNT OF ANNUAL PARTICIPATION COMMITMENT MET		\$434,278.00

NOTE: Please attach copies of any receipts related to direct expenditures and, when applicable, individual project sheets.